

There are many commercially available products that can be applied to copper alloys to accelerate the oxidization process. Many of these are available at your local hardware store paint departments. For the names of product suppliers, contact Wagner directly.

Here is a blacksmith recipe provided by Travis Fleming of Fleming Iron Works:

- 1 qt white vinegar
- 1 qt ammonia
- 1 cup lemon juice
- 1 tbs salt.

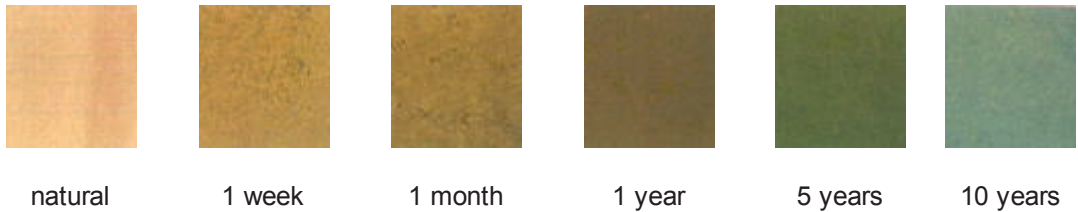
Clean copper then spray on. it will turn in a few minutes

The following color charts are based on the Copper Development Association's *Architectural Guide* and indicate aging patterns on various copper alloys.

C23000 - RED BRASS

Nominal Composition:
85% copper, 15% zinc

Color:
Natural – reddish yellow
Weathered – from chocolate brown to gray-green patina in six years

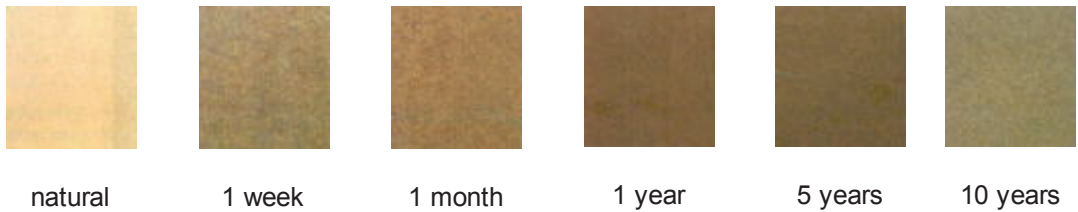


C28000 - MUNTZ METAL

Nominal Composition:
60% Copper; 40% Zinc

Color:
Natural – reddish yellow

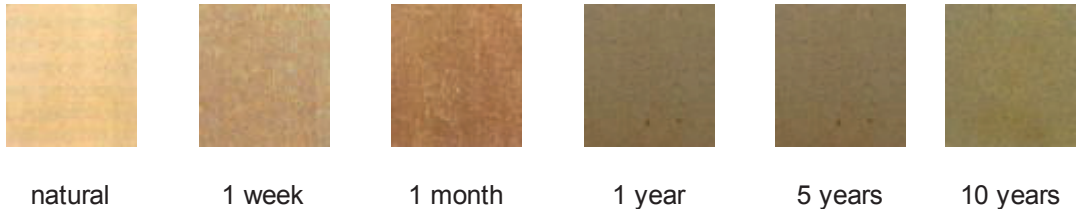
Weathered – from red brown to gray-brown in six years



C38500 - ARCHITECTURAL BRONZE

Nominal Composition:
57% Copper; 40% Zinc; 3% Lead

Color:
Natural – reddish yellow
Weathered – from russet-brown to dark brown in six years



Sheet and Plate Alloys	Extrusions	Castings	Fasteners	Tube & Pipe	Rod & Wire	Filler Metals
Alloy C28000 Muntz Metal	Alloy C38500 Architectural Bronze	Alloys C85500, C85700	Alloys C26000, C36000, C46400, C46500	Alloy C23000 Red Brass	Alloy C28000 Muntz Metal	Alloy C68100 low fuming bronze