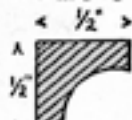


COVE MOULDINGS

#B2814



#B2815



#B2818



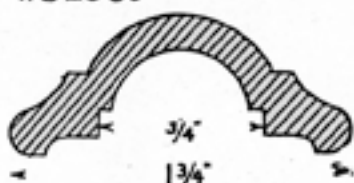
For Coves in Steel, refer to page 42.

HANDRAILS

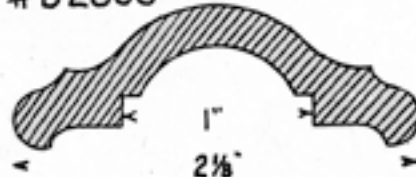
#B 2802



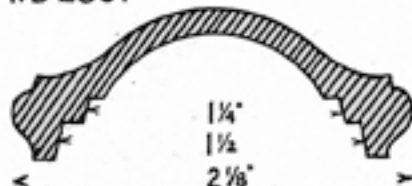
#B 2866



#B 2868



#B 2801



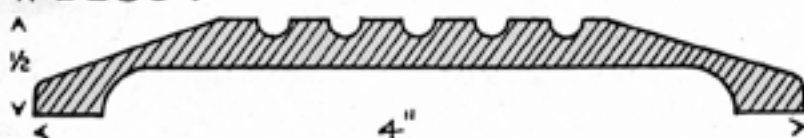
#B 2800



For Handrails in Steel, refer to page 22.

DOOR SADDLES

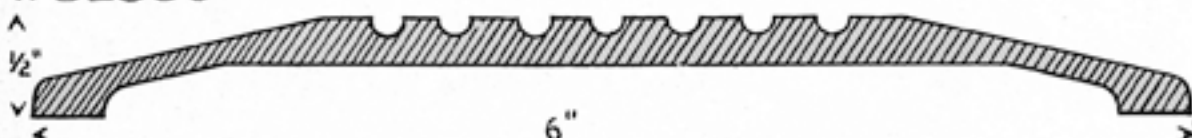
#B 2804



#B 2805

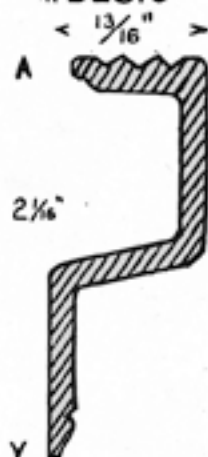


#B 2806



STEP NOSING

#B2810



For Door Saddles and Nosings in Steel, refer to pages 39 and 40.

Bronze Sections are furnished either in Random Lengths or Cut to Length.