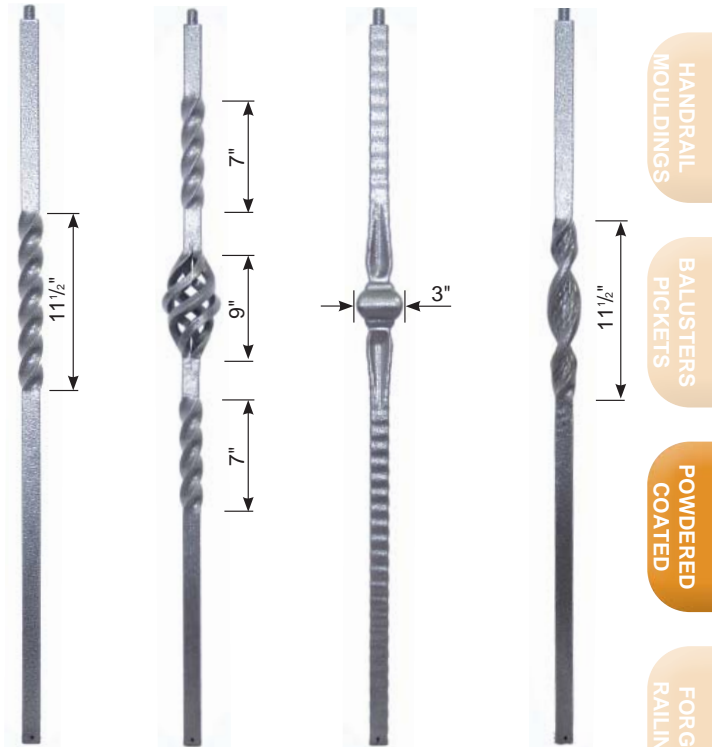


Pre-Painted, Powder Coated Components For Quick, Economical Installations

The *Forged Balusters, Posts* and *Components* shown on these pages are now available in ten stock colors. They are well suited for use in wooden rail and stringer applications and are easily installed using standard tools and *Epoxy* adhesive.



Photo courtesy of Moore's Welding Greenville, NC



HANDRAIL
MOLDINGS

BALUSTERS
PICKETS

POWDERED
COATED

FORGED
RAILINGS

POSTS

1 7/16" Square Bar x 48" long. Measurements are approximate.

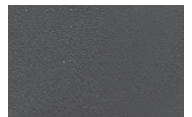
- | | | | |
|---------------|---------------|---------------|---------------|
| FP1654 | FP1655 | FP1656 | FP1657 |
|---------------|---------------|---------------|---------------|

COLOR SELECTION:

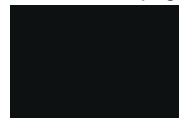
When ordering, designate your color selection by adding the proper suffix – listed below – to the part number. For example, if you would like an *FP1654* post in *Silver Vein*, use part number *FP1654-SV*. **All items are not available in all colors.** Confirm availability on www.shopwagner.com.

Matte Phosphate is a light rust preventative solution that prepares the surface for painting. Mill steel appearance.

Please review our quality expectations statement on page 261.



Matte Phosphate -MP



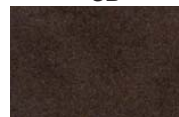
Satin Black -SB



Flat Black -FB



Dark Champagne -DC



Midnight Bronze -MB



Shadow Grey -SG



Warm Nickel -WN



Old World Copper -OWC



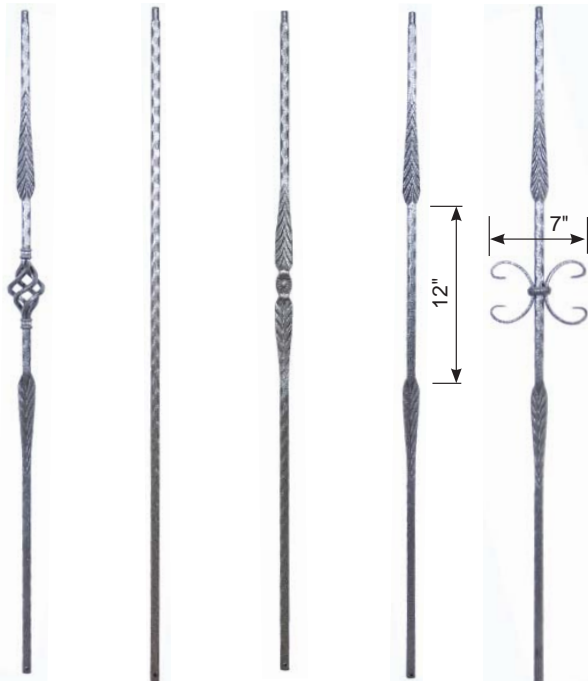
Copper Vein -CV



Silver Vein -SV

REGENCY
RAILINGS

CASTINGS
STAMPINGS



SANTA FE HAMMERED SERIES

3/16" Square Bar x 44" long. See optional 3/16" bases on page 122.

- | | | | | |
|----------------|---------------|---------------|----------------|----------------|
| FB16312 | FB1638 | FB1639 | FB16310 | FB16311 |
|----------------|---------------|---------------|----------------|----------------|

HANDRAIL
MOULDINGS

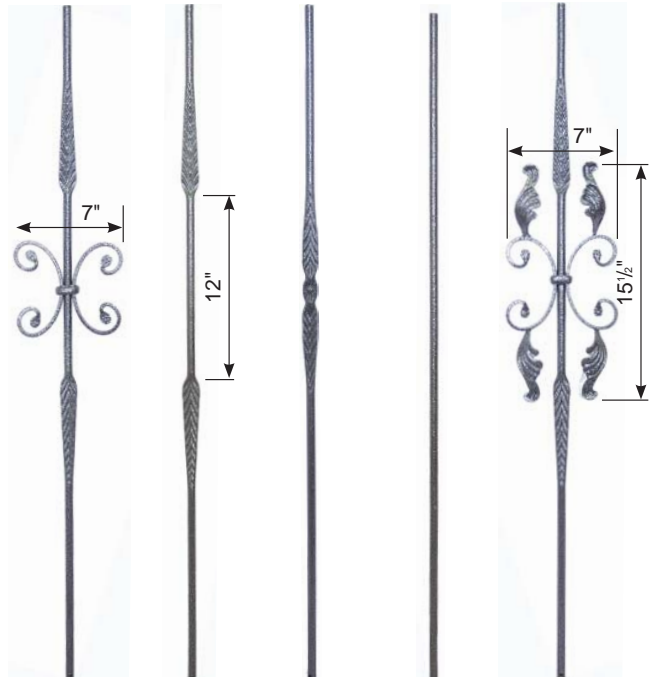
BALUSTERS
PICKETS

POWDERED
COATED

FORGED
RAILINGS

REGENCY
RAILINGS

CASTINGS
STAMPINGS



ROUND BALUSTER SERIES

3/16" Round Bar x 44" long. See optional 3/16" bases on page 122. Measurements are approximate. **Select colors from page 119.**

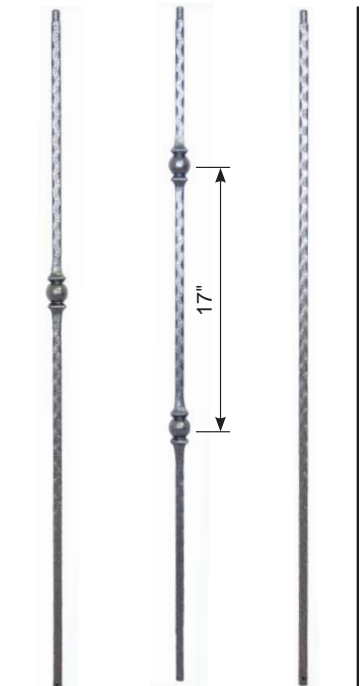
- FB16119 FB16118 FB16117 FB1622 FB16120



GOTHIC BALUSTER SERIES

3/16" Square Bar x 44" long. See optional 3/16" bases on page 122. Measurements are approximate. **Select colors from page 119.**

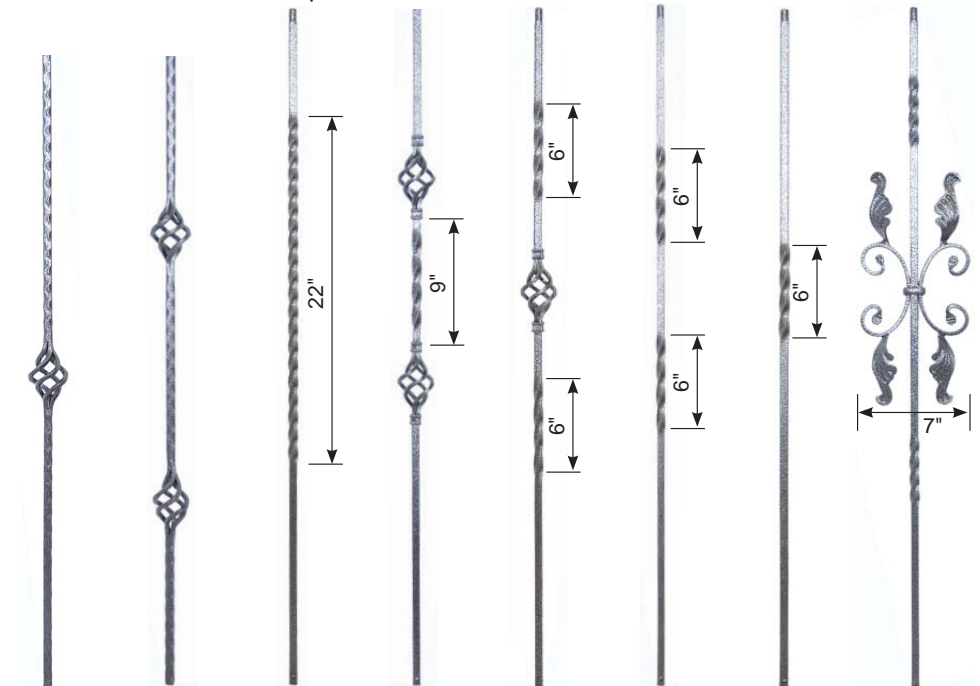
- FB1619 FB1617 FB1618 FB1652



SQUARE BALUSTER SERIES

3/16" Square Bar x 44" long. See optional 3/16" bases on page 122.

- FB16126 FB16127 FB1638



TWIST AND BASKET SERIES

1/2" Square Bar x 44" long, except as noted. Measurements are approximate. **Select colors from page 119.**

- FB16115* FB16122* FB16121 FB1614 FB1613 FB1612 FB1611 FB16116

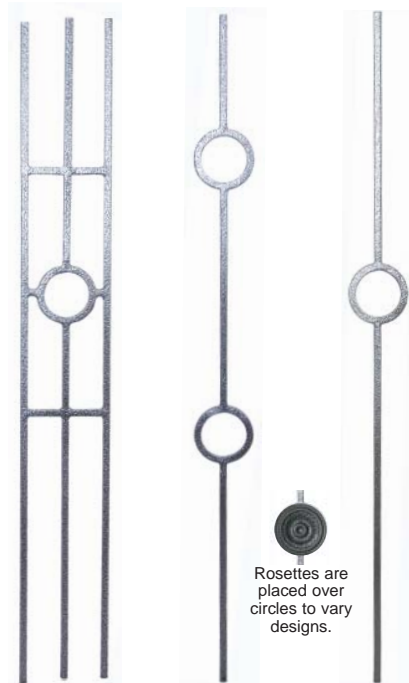
*Collarless Basket, 41" Long.



RIBBON BALUSTER SERIES

1/2" Square Bar x 44" long.
Measurements are approximate. **Select colors from page 119.**

- FB1615 FB1616 FB1636 FB1637 FB16110 FB16111**



DESIGNER IRON SERIES

1/2" Square Bar x 44" long.
Rosettes are 4" diameter.

- FB16132 FB16131 FB16130**



131644*



131643*



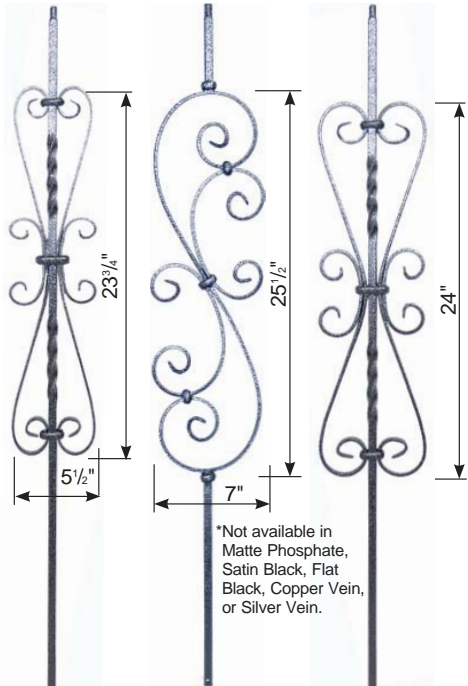
131642*



131641*

Rosettes are placed over circles to vary designs.

* Not available in Satin Black



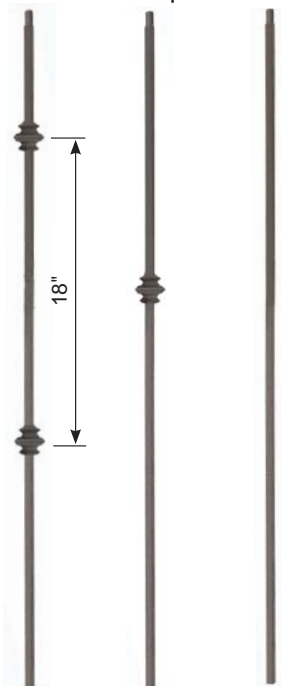
SCROLL SERIES

3/16" Square Bar x 44" long, except as noted.
See optional 3/16" bases on page 122.

- FB16141 FB16123* FB16124**

1/2" Square

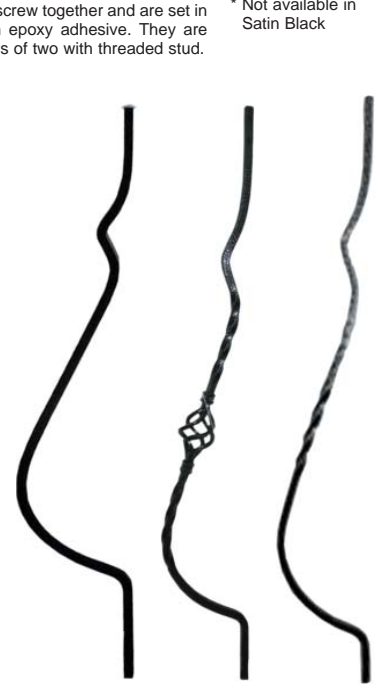
*Not available in Matte Phosphate, Satin Black, Flat Black, Copper Vein, or Silver Vein.



VERSATILE SERIES

1/2" Square Bar x 44" long.
Select colors from page 119.

- FB16135 FB16134 FB1621**



BALCONY BALUSTERS

1/2" Square Bar x 40" long.
Belly extends 5 3/8" from vertical bar line.

- FB1624 FB1626 FB1625**

HANDRAIL MOLDINGS

BALUSTERS PICKETS

POWDER COATED

FORGED RAILINGS

REGENCY RAILINGS

CASTINGS STAMPINGS

HANDRAIL MOULDINGS

BALUSTERS PICKETS

POWDERED COATED

FORGED RAILINGS

REGENCY RAILINGS

CASTINGS STAMPINGS

BASES AND COLLARS

Cast Iron, except as noted.

Cast Baluster Bases may be snug on **Hammered Bar Balusters**. Order next step up in size for use with **Hammered Bar**.

Measurements are approximate. **Select colors from page 119.**

| | | |
|---------------|--|---|
| | *K16319 is made from Aluminum, not Cast Iron, in the following colors: Dark Champagne, Midnight Bronze, Old World Copper, Shadow Grey and Warm Nickel. | |
| Square Hole | Cast Iron Without Set Screw Cast Iron With Set Screw | Round Hole |
| 1/2" 9/16" | K1631 K16319* K1633 K16320 | 1/2" 9/16" |
| | | Cast Iron Without Set Screw Cast Iron With Set Screw |
| | | K16318 K16313 |

| | | |
|----------------|----------------|--------------------------------------|
| | | |
| Square Hole | Square Hole | Round Hole |
| 1/2" Forged | 1/2" Forged | 9/16" Cast Iron Without Set Screw |
| K1634 | K1635 | K1653 |

| | | |
|---|---|----------------------------------|
| | | |
| Square Hole | Round Hole | Square Hole |
| 1/2" 9/16" Cast Iron With Set Screw | 1/2" 9/16" Cast Iron With Set Screw | 1/2" Cast Iron With Set Screw |
| K1632 K16317 | K16316 | K1651 |

K1623
Includes mounting sleeve, cover flange and set screws. For 1 3/16" posts shown on page 119.

- Place mounting sleeve into stringer or floor to accept post.
- Slide cover flange over bottom of post.
- Apply epoxy to inside of sleeve.
- Insert post and use set screws to fasten post base.



| | |
|---|----------------|
| 3M™ SCOTCH-WELD™ EPOXY | |
| Applicator Gun with Plunger, 50 ml Epoxy and 2 Tips | EPX100 |
| 1 50ml Epoxy Cartridge Refill and 2 Tips | EPX100R |
| Plunger | EPX100P |

INSTALLATION

Always wear proper safety equipment when cutting, drilling or welding.

The knee wall/stringer must be secure!
This wall will be the base for the balustrade system.

FOR NEW INSTALLATIONS:

1. Lay out your center marks on the top of the knee wall.
2. Cut and lay out the wooden handrail and lay it on top of the knee wall.
3. Transfer your marks from the knee wall to the handrail.
4. After transferring your marks onto the handrail, drill the correct size holes into the knee wall and into the handrail. Most designs will require that you chisel the holes square in both the knee wall and handrail.
5. Check for fit using a 6" long piece of the matching bar. Place it into all holes. While the holes in the knee wall should remain extremely tight, the holes in the handrail should allow the bar to slide in easily. You should also check the angle with a pitch block.
6. Now is the time to begin cutting the **Balusters**. Always allow for a minimum of 1 1/2" of the vertical bar to be inserted into the knee wall and 1" to be inserted into the wooden handrail. This should be just a straight cut.
7. Grind all cut ends to allow for a smoother entry into the holes and slide **Baluster Bases** into place. Test your fit before proceeding.
8. Apply a small amount of **Epoxy** adhesive into each hole and insert the **Baluster**. Be certain to check each **Baluster** for any slight alignment or adjustments at this time.
9. Continue this same procedure until you have installed all **Balusters** into the knee wall.
10. After all decorative **Balusters** are in place, begin fitting the wooden handrail on top of the decorative ironwork. Apply a small amount of **Epoxy** into each hole when ready for permanent attachment.

CONVERTING EXISTING WOOD BALUSTERS TO IRON BALUSTERS:

1. Remove the existing wood balusters by cutting each in half between the rail and floor with a saw and pulling the two ends free.
2. Pull remaining nails and fill nail holes with matching putty then sand and touch-up.
3. Modify existing holes to accept iron balusters. Drill 1/16" down into the floor or knee wall and 1 1/2" up into the underside of the handrail.
4. Measure the distance at each **Baluster** from the bottom of the rail to the floor surface. Add 1 3/8" to this measurement to determine baluster cut length.
5. Cut balusters to length.
6. Test fit before applying **Epoxy** adhesive and adjust hole size or length as necessary. **Balusters** should slide up into the rail and then down into the floor.
7. Once you have confirmed fit, remove the **Baluster** and slide **Baluster Bases** onto top and bottom of **Balusters**.
8. Apply a small amount of **Epoxy** adhesive into the top and bottom holes and then set your **Epoxy** into place.
9. Confirm alignment and continue with the balance of your installation.