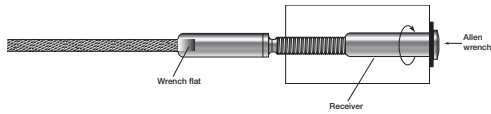


Note: If you are using **Receivers** with **Push-Lock™ Studs** on both ends (**Post A** and **Post B**), then follow No. 2 below for tensioning both ends.

2. Tension the **Cable**. Grip the wrench flat on the end of the **Push-Lock™ Stud** with a 3/8" open-end wrench (to keep the **Cable** from turning), then turn the **Receiver** with a 3/16" Allen wrench until the **Cables** are tight.



Section B. Instructions in this section apply if you are using a **Receiver** with **Push-Lock™ Stud** on one end of your **Cable** run and a **Pull-Lock™ Fitting** on the other end. For all other combinations, see Section A.

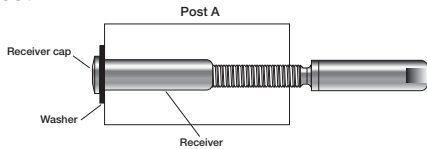
Step A. Install the **Receiver** with **Push-Lock™ Stud** in the first **End Post (Post A)** below).



1. Turn the **Receiver** onto the threads of the **Push-Lock™ Stud** approximately 6 turns.



2. Slip the **Washer** over the **Body** of the **Receiver** (CR716SAE **Washer** for **Wood Posts**, black Delrin® **Washer** for metal **Posts**), then slide the **Receiver** with **Push-Lock™ Stud** into the hole in **Post A**, with the **Receiver** cap resting against the back side of the **Post**.



3. Push the **Cable** into the hole in the **Stud** as far as it will go (approximately 1 1/16"). Twist the **Cable** in the right-hand direction (with the lay of the **Cable**) as you push it into the **Fitting**. You will feel it slide through the jaws inside the **Stud**.



4. Pull the **Cable** to set the gripping action of the **Push-Lock™ Stud**.

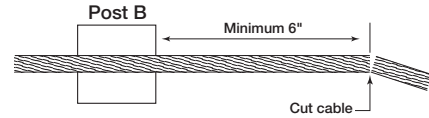


Step B. Install the **Pull-Lock™ Fitting** on **Post B**.

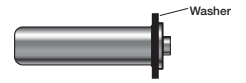
1. Run the **Cable** through your **Intermediate Posts** (if any) and through **Post B** where you will be installing the **Pull-Lock™ Fitting**.



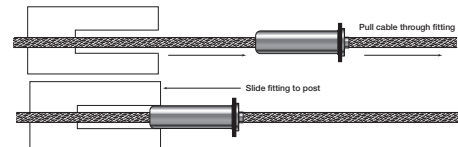
2. Cut the **Cable** with a **Cable Cutter**, leaving enough **Cable** extending out from the back side of the **Post** to be able to grasp the **Cable** firmly with your hand (6" or more). See following drawing.



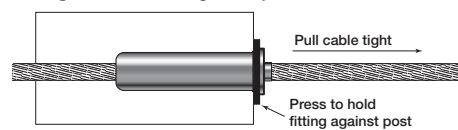
3. Slip the **Washer** over the **Body** of the **Pull-Lock™ Fitting** (CR716SAE **Washer** for **Wood Posts**, black Delrin® **Washer** for metal **Posts**).



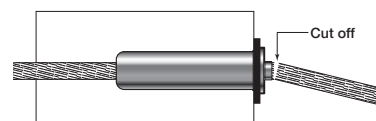
4. Push the **Cable** into the hole in the front of the **Pull-Lock™ Fitting** and pull the **Cable** through the **Fitting**. Twist the **Cable** in the right-hand direction (with the lay of the **Cable**) as you push it into the **Fitting**. Then slide the **Fitting** along the **Cable** and up to the back side of the **Post**.



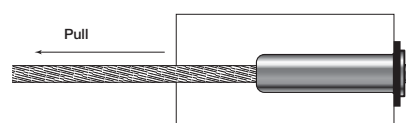
5. Hold the **Cable** with one hand and slide the **Pull-Lock™ Fitting** into the hole in the **Post**. Press on the back of the **Pull-Lock™ Fitting** to hold it securely in the **Post** and pull the **Cable** through the **Fitting** until it is as tight as you can make it.



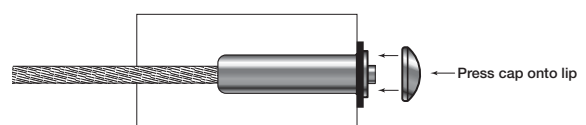
6. Cut the **Cable** flush with the hole in the back of the **Pull-Lock™ Fitting**, using a **Cut-Off Wheel (CRCUTOFFKIT)**.



7. Pull the **Cable** to set the gripping action of the **Pull-Lock™ Fitting**.

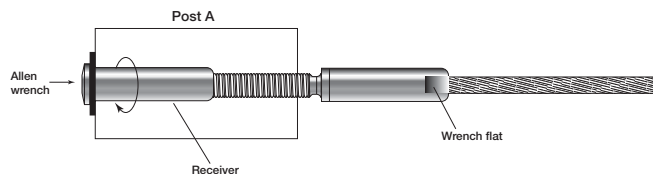


8. Press the cap onto the lip of the **Pull-Lock™ Fitting**.



Step C. Tension the cable after all of the **Fittings** have been installed on both **End Posts**.

Grip the wrench flat on the end of the **Push-Lock™ Stud** at **Post A** with a 3/8" open-end wrench (to keep the cable from turning), then turn the **Receiver** with a 3/16" Allen wrench until the **Cables** are tight.



GENERAL
INFO

TECHNICAL
INFO

BUILDING
CODES

GUIDE
SPECS

INSTALLATION
GUIDES

INDEX