

GENERAL INFO

RECEIVER WITH PUSH-LOCK™ STUD INSTALLATION INSTRUCTIONS

Make sure the holes are drilled properly in the **Posts** where you will be installing your fittings.

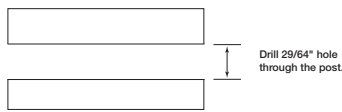


If you are installing the fittings in a metal **Railing**, see *Metal Railings/Hardware Mounting Holes/Boring Guide* for boring instructions.

If you are using wood **End Posts**, see *Wood Railings-Mounting Alternatives* section in this guide for hole sizes.

TECHNICAL INFO

For wood, first drill a pilot hole through the **Post** that is $\frac{1}{32}$ " larger than the diameter of the **Cable** you are using. It is best to drill the pilot hole from one side about half-way through the **Post** and then drill from the other side to complete the hole. Then drill a $\frac{29}{64}$ " hole from the back side of the **Post** at least $1\frac{1}{8}$ " deep (deeper if you are counterboring for the over-sized **Washer**).



BUILDING CODES

Section A. Instructions in this section apply if you are using a **Receiver** with **Push-Lock™ Stud** on one end of your **Cable** run and any device other than a **Pull-Lock™ Fitting** on the other end. If you are using a **Pull-Lock™ Fitting** on the other end, see Section B.

Step A. Install other fitting on the first **End Post (Post A)** below.

1. Install the fitting you will be using in the **End Post** opposite the end in which you will be installing the **Receiver with Push-Lock™ Stud** first (**Post A**).

GUIDE SPECS



INSTALLATION GUIDES

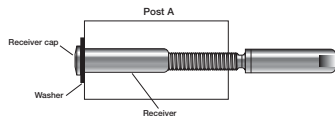
If you will be using another **Receiver with Push-Lock™ Stud**, see step 1A below. For all other fittings, follow the instructions for installing that device found in this *Installation Guide*, and then proceed to Step B.

- 1A. If you are installing another **Receiver with Push-Lock™ Stud** on the other end of your **Cable** run (**Post A**), install that **Tensioner** in **Post A**, as follows, before you proceed with step B.

- A. Turn the **Receiver** onto the threads of the **Push-Lock™ Stud** at least 6 turns.



- B. Slip the **Washer** over the **Body** of the **Receiver (CR716SAE Washer for Wood Posts, black Delrin® Washer for metal Posts)**, then slide the **Receiver with Push-Lock™ Stud** into the hole in your **Post** with the **Receiver cap** end at the back side of the **Post**.



- C. Push the **Cable** into the hole in the fitting as far as it will go (approximately $1\frac{1}{16}$ "TM). Twist the **Cable** in the right-hand direction (with the lay of the **Cable**) as you push it into the fitting. You will feel it slide through the jaws inside the **Stud**.



INDEX

- D. Pull the **Cable** to set the gripping action of the **Push-Lock™ Stud**.

Step B. Install the **Receiver with Push-Lock™ Stud** on **Post B**.



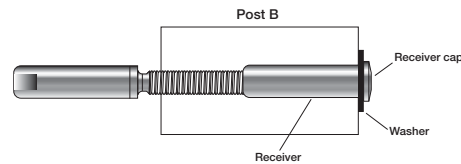
1. Run the **Cable** through the **Intermediate Posts** (if any) to **Post B**.



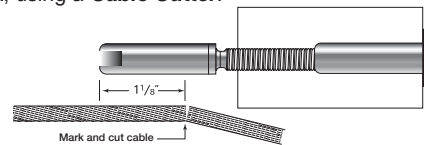
2. Turn the **Receiver** onto the threads of the **Push-Lock™ Stud** approximately 6 turns.



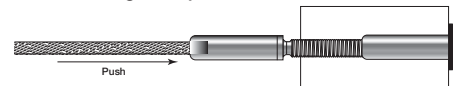
3. Slip the **Washer** over the **Body** of the **Receiver (CR716SAE Washer for Wood Posts, black Delrin® Washer for metal Posts)**, then slide the **Receiver with Push-Lock™ Stud** into the hole in **Post B** with the **Receiver cap** resting against the back side of the **Post**.



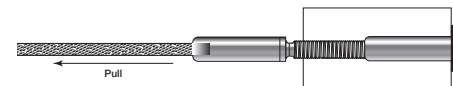
4. Pull the **Cable** tight and mark the **Cable** at a point $1\frac{1}{8}$ " from the leading edge of the **Push-Lock™ Stud**. Cut the **Cable** at the mark, using a **Cable Cutter**.



5. Push the **Cable** into the hole in the **Stud** as far as it will go (approximately $1\frac{1}{16}$ "TM). Twist the **Cable** in the right-hand direction (with the lay of the **Cable**) as you push it into the fitting. You will feel it slide through the jaws inside the **Stud**.



6. Pull the **Cable** to set the gripping action of the **Push-Lock™ Stud**.



Step C. Tension the **Cable** after all of the fittings have been installed on both **End Posts**.

1. If there is a tensioning device on **Post A**, tension both ends. Follow the instructions for tensioning the device on **Post A** found in this guide and the instructions in No. 2 below for tensioning the **Receiver with Push-Lock™ Stud** in **Post B**.

Note: If you are using an **Invisiware® Receiver** on the other **End Post A**, tension the **Receiver** by turning it onto the threads of the **Swaging Stud** at least far enough that none of the threads on the **Stud** are exposed when the **Cables** are tight.