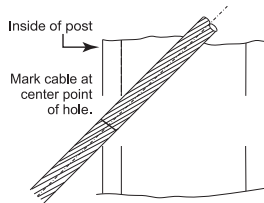
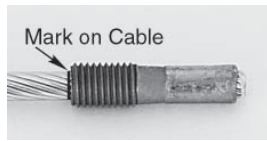


This section applies if you are installing **Invisiware Receivers®** on one end and another type of fitting on the other end of your **Cable** run. If the **Cables** are supplied with **Studs** on the **Invisiware®**, you can disregard steps B and C below.

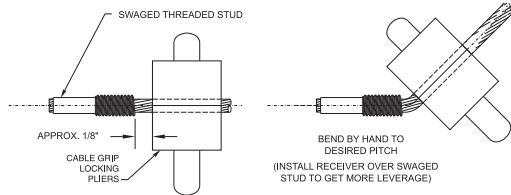
- A. Install the fitting on the non-**Receiver** end of the run first. See the instructions for that fitting in the *Installing Cable* section of this *Installation Guide*.
- B. Pull the cable to the hole in the **Post** at the **Receiver** end of the run. Mark the **Cable** at the center point of the hole. See illustration below.



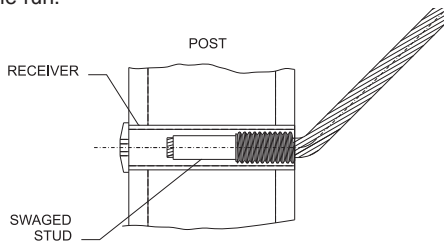
- C. Swage the **Stud** onto the end of the **Cable** with the threaded end at the mark made in Step B. See the *Swaging Instructions* section of this *Installation Guide* and the illustration at right. Cut off any excess **Cable**, leaving a small "tail" out of the end of the **Stud**.



- D. Grip the **Cable** with **Cable Grip Locking Pliers** approximately 1/8" from the swaged **Stud**. Screw the **Receiver** onto the **Stud** for leverage, and bend the **Cable** by hand to the approximate angle desired. This bend does not have to be precise.



- E. Install the **Receiver** in the **Post**, following the instructions for installing **Invisiware® Receivers** at **Post B** in the *Installing Cable* section of this *Installation Guide*. When tensioned, the **Cables** will self-align with the fitting at the other end of the cable run.



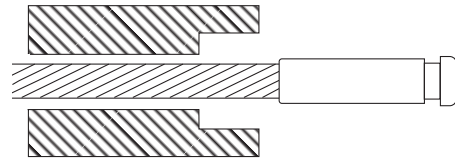
ULTRA-TEC CLIP-ON STOP INSTALLATION INSTRUCTIONS

Feed **Cables** through **Intermediate Posts** and install **Clip-on Stop** first, before installing tensioning end of **Cable**.

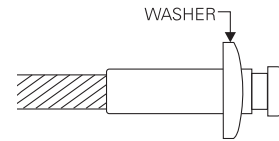
- A. Drill 17/64" (.266") hole all the way through the **Post**.
- B. If you wish to countersink the Stop in a **Wood Post**, then drill a 15/16" (.938") hole to a depth of 3/16" in the back side of the **Post**.

If you are using steel pipe, see *Fabrication Instructions*. There should be a 17/32" (.531") hole counterbored to a .100" depth, so the full diameter of the **Washer** will rest on a flat surface in the pipe.

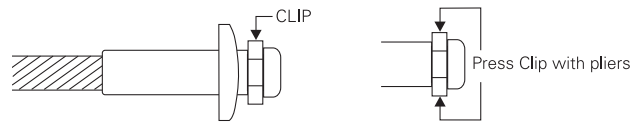
- C. From the inside side of the **Post**, slide the **Cable** through the hole, Stop end first, and out the back side of the **Post**.



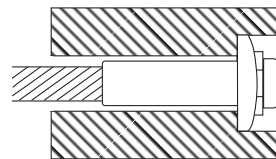
- D. Slide the **Washer** over **Body** of the Stop.



- E. Force the **Clip** into the slot in the **Stop**, and press it in by hand. Press **Clip** with pliers to secure it in slot.



- F. Pull **Cable** back through the hole, until the **Washer** stops against the **Post**, with the **Clip** resting in the recess of the **Washer**.



- G. Install the hardware on the **Post** at the tensioning end of the cable.

PUSH-LOCK™ FITTINGS INSTALLATION INSTRUCTIONS

- A. **Instructions in this section apply if the Cables are supplied with excess length and you will be cutting the Cables to size during installation.** If **Cables** are supplied cut to length, see Section B below.



Install tensioning end of run to one **End Post** and run **Cables** through **Intermediate Posts**, before installing **Push-Lock™ Fitting**.

- 1. Make sure the holes are drilled properly in the **End Post** where you will be installing the **Push-Lock™ Fitting**.

If you are installing the Push-Lock™ Fittings in a metal Railing, see *Metal Railings/Hardware Mounting Holes/Boring Guide* for boring instructions for your **End Post**.