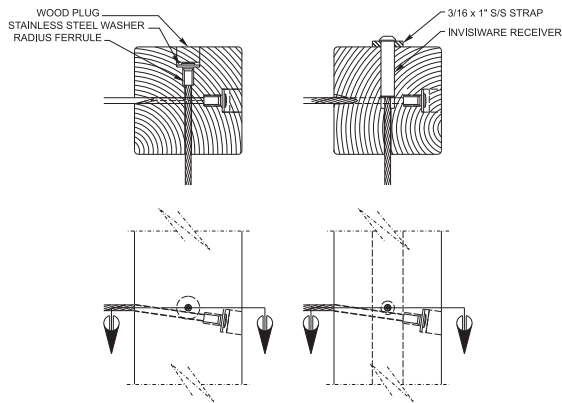
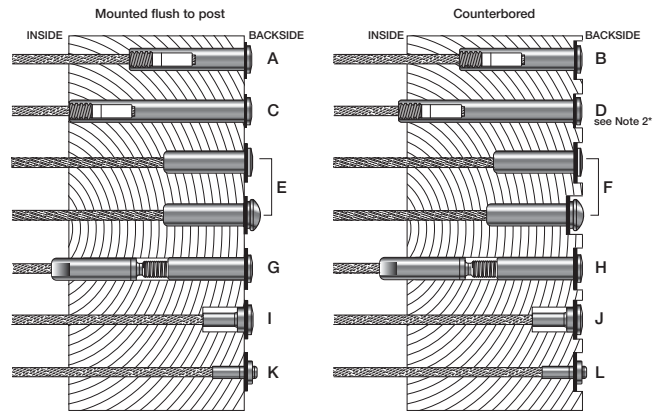


Following are illustrations of several hardware mounting alternatives and some techniques for mounting hardware to the **End Posts**.



## Options for Mounting Hardware in Wood Posts

Drill holes in your **End Posts** using sizes shown in the chart.



GENERAL INFO

TECHNICAL INFO

BUILDING CODES

GUIDE SPECS

INSTALLATION GUIDES

INDEX

### For Wood Posts

#### Drilling Holes in End Posts for Cable Mounting Hardware

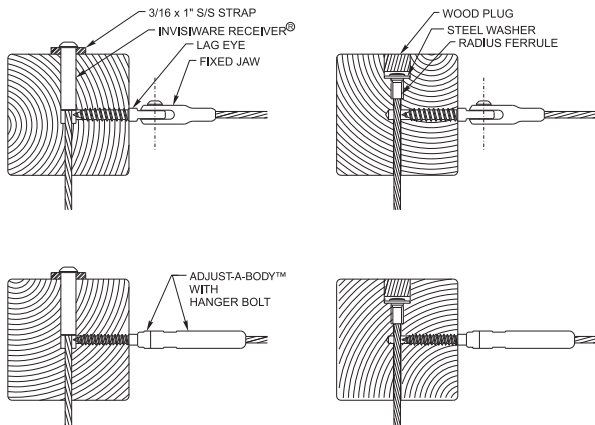
Where hardware requiring mounting with **Lag Eyes** is being used, drill holes in the **End Posts** using the drill size shown on the following chart and screw **Lag Eyes** into the holes. The **Fixed Jaws**, **Adjust-A-Jaw**® and **Adjust-A-Body**® with **Threaded Eye Tensioners**, or **Push-Lock™ Fittings** with **Threaded Eye** will be mounted to the **Lag Eyes**.

Cable Diameter	Using Lag Eye Part #	Drill Size
1/8"	<b>CRLE6</b>	17/64"
3/16"	<b>CRLE6</b>	17/64"
1/4"	<b>CRLE8</b>	3/8"

Where **Adjust-A-Body**® with **Hanger Bolt Tensioners** are being used, drill holes in the **End Posts** using the drill size shown on the following chart and screw the **Hanger Bolt** into the holes. **Adjust-A-Body**® will be mounted to the **Hanger Bolts** (see *Installing Cable*).

Cable Diameter	Using Adjust-A-Body® Part #	Drill Size
1/8"	<b>CRAJB6</b>	15/64"
1/8"	<b>CRAJB6L</b>	15/64"
3/16"	<b>CRAJB6</b>	15/64"
3/16"	<b>CRAJB6L</b>	15/64"
1/4"	<b>CRAJB8</b>	11/32"

\*Due to the differences in different types of woods, slightly smaller or larger holes may be required for your particular application.



Mounting Option	Cable Diameter	Drill Hole for Cable, Threaded Stud, or Clip on Stop	Drill Hole for Fitting (Receiver, Radius Ferrule, Push-Lock™, or Pull-Lock™ see Note 1)	Use Stainless Steel SAE Flat Washer	For Counterbore Diameter of Hole
A & B Invisiware® Receiver under 3.5" long	1/8"	11/32"	29/64"	7/16"	15/16"
C & D Invisiware® Receiver 3.5" long (CRR662)	1/8"	NA	29/64" note 2*	7/16"	15/16" note 2*
E & F Push-Lock™ or Pull-Lock™ Fitting	1/8"	5/32"	29/64"	7/16"	15/16"
G & H Receiver with Push-Lock™ Stud	1/8"	5/32"	29/64"	7/16"	15/16"
I & J Radius Ferrule	3/16"	7/32"	29/64"	7/16"	15/16"
K & L Clip-on Stop	1/4"	9/32"	35/64"	1/2"	1 3/32"
	1/8"	17/64"	NA	NA	15/16"
	3/16"	17/64"	NA	NA	15/16"

\*Note 1: Hole depth will depend upon the mounting option you choose and the length of the part you are using.

\*Note 2: If you are mounting a 3 1/2" long **Invisiware Receiver** in a standard 4 x 4 (3 1/2" x 3 1/2") **Post**, you: 1. will drill your hole clear through the **Post**, and 2. should not counterbore the hole if the **Cable run** is on a severe pitch or stairway. If your **End Post** is thicker than 3 1/2", then drill your holes using mounting options A & B.

Cable Size	Hole Diameter where Studs/ Ferrules are Swaged in the Field or Swageless Fittings are Put on the Cables	Hole Diameter Using Push-Lock™ or Pull-Lock™ Fittings	Hole Diameter Where Cables are Supplied by Wagner with Fittings Swaged on Both Ends of the Cable	
			Using Threaded Studs	Using Ferrules for Clip-on Fixed Jaws or Using Clip on Stop
1/8"	5/32"	5/32"	11/32"	17/64"
3/16"	7/32"	7/32"	11/32"	17/64"
1/4"	9/32"	NA	19/32"	29/64"