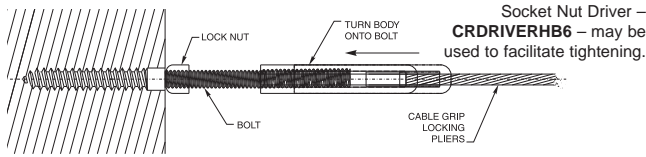
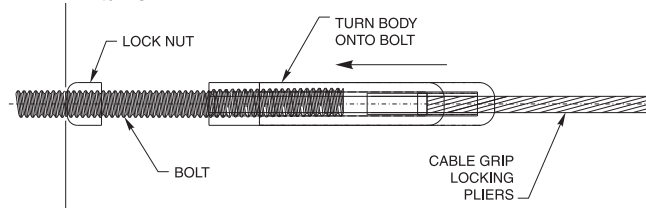


If you are installing into wood with a **Hanger Bolt**, screw the **Hanger Bolt** into a pre-drilled pilot hole in the **Post**. Screw the lock nut onto the threads of the bolt, then hold the **Cable** closely behind the **Body** and turn the **Body** by hand onto the threaded end of the bolt at least 6 full turns.



If you are installing into a threaded hole in a metal **Post**, screw the bolt into the threaded hole in the **Post**. Screw the lock nut onto the threads of the bolt, then hold the **Cable** closely behind the **Body** and turn the **Body** by hand onto the threaded end of the bolt at least 6 full turns.



If you are installing an **Adjust-A-Body™** concrete anchor bolt end into a concrete anchor bolt, screw the bolt into the threaded hole in the anchor bolt. Screw the lock nut onto the threads of the bolt, then hold the **Cable** closely behind the **Body** and turn the **Body** by hand onto the threaded end of the bolt at least 6 full turns.

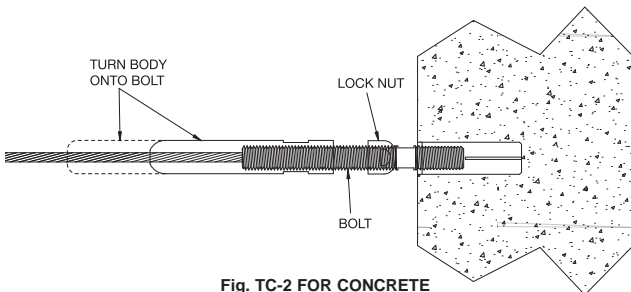
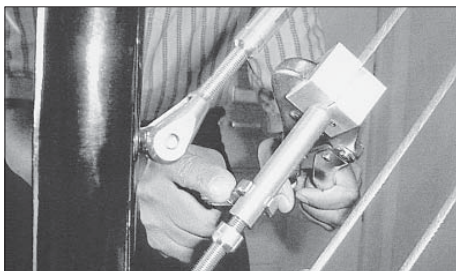
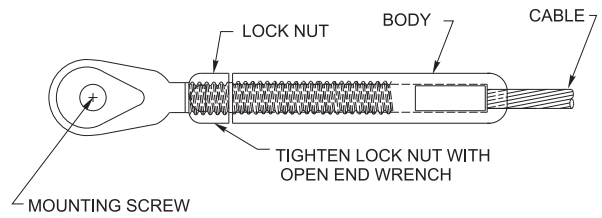


Fig. TC-2 FOR CONCRETE

- Repeat the above steps for each **Cable** to be installed. Do not tension the **Cables**, until all **Cables** have been installed between **End Posts** "A" and "B."
- After all the **Cables** have been installed, tension the **Cable** (to approximately 400 lbs.) with an open end wrench, holding the **Cable** with **Cable grip locking pliers** to prevent it from rotating. **See Tensioning Cables for sequence to use in tensioning Cables.**



- If **Tensioners** are mounted to **Tabs**, structural tees or **Lag Eyes**, tighten the mounting screws.

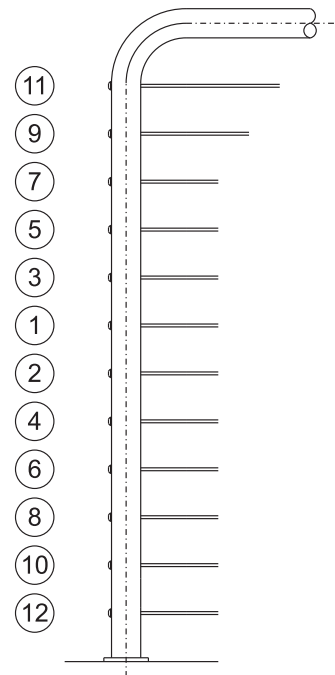


- On all installations, tighten the lock nut against the **Body** of the fitting with an open end wrench.

**NOTE:** In areas prone to tampering, the use of permanent setting thread sealant is recommended for mounting screws and lock nuts.

**F. Tensioning Cables**

**NOTE:** Tension in sequence, beginning with **Cable** nearest center of **Post** (see Figure V below).



RECOMMENDED TENSIONING SEQUENCE

FIG. V



GENERAL INFO

TECHNICAL INFO

BUILDING CODES

GUIDE SPECS

INSTALLATION GUIDES

INDEX