

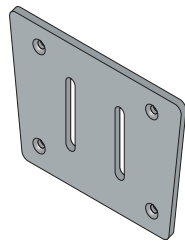
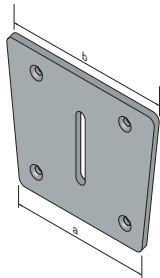
MOUNTING PLATES

For installation details and mounting options using these components, refer to *Cable Railing Mounting Options and Mounting Hardware Catalog* available online or directly from **Wagner**.

FASCIA MOUNTING PLATE WITH WELD SLOTS AND FOUR HOLES

5" high. Four 7/16" holes for 3/8" mounting bolts. Attach to tube with 3/16" weld all around inside of 3/8" x 2 1/2" slot. Weld to post from the back side. Use **Spacer** shown below between posts for double post applications. Double posts with 1" spacer will use plate with two slots as noted below.

| Pipe Size | Tube Size | Double Post With 1" Spacer | a | b | Weld Slots | Steel 1018 | Stainless Type 304 |
|-----------|-----------|----------------------------|----|----|------------|------------|--------------------|
| 1 1/4" | 1.660" | | 5" | 6" | 1 | CRFAP4 | CRFAP4S |
| 1 1/2" | 1.900" | | 5" | 6" | 1 | CRFAP4 | CRFAP4S |
| 2" | 2.375" | | 6" | 7" | 1 | CRFAP5 | CRFAP5S |
| | 1" x 3" | | 4" | 5" | 1 | CRFAP1 | CRFAP1S |
| | 3" x 3" | 1" x 3" | 6" | 7" | 2 | CRFAP3 | CRFAP3S |
| | 1" x 2" | | 4" | 5" | 1 | | CRFAP1S |
| | 2" x 3" | 1" x 2" | 6" | 7" | 2 | | CRFAP3S |
| | 2" x 2" | | 5" | 6" | 1 | | CRFAP2S |

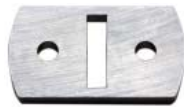


Refer to LEED statement on page 263.



CABLE BRACE FLOOR PLATE

1/4" thick. For 1/4" x 1" **Cable Braces**. Countersunk for 3/8" mounting bolts. Weld to cable brace from the back side of the **Plate**.



| Brace Size | Steel | Stainless |
|------------|---------|-----------|
| 1/4" x 1" | CRFLPCB | CRFLPCBS |

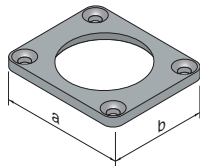
BEVELED WASHERS

Stainless steel. For use with solid bar or posts drilled at an angle.

| Pitch / Angle | 1/8" Cable | 3/16" Cable | 1/4" Cable |
|---------------|------------|-------------|------------|
| 30° - 33° | CRBW326 | CRBW326 | CRBW328 |
| 34° - 36° | CRBW356 | CRBW356 | CRBW358 |
| 37° - 39° | CRBW386 | CRBW386 | CRBW388 |

FLOOR PLATES WITH CENTER HOLE FOR PIPE

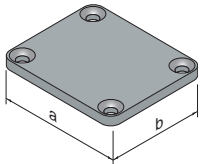
1/4" thick. Countersunk for 1/4" mounting screws. Weld to pipe from the back side.



| Pipe Size | Outside Diameter | a | b | Steel 1018 | Stainless Type 304 |
|-----------|------------------|--------|--------|------------|--------------------|
| 1 1/4" | 1.660" | 3" | 2 1/2" | CRFLP1M | CRFLP1MS |
| 1 1/2" | 1.900" | 3" | 2 1/2" | CRFLP2M | CRFLP2MS |
| 2" | 2.375" | 3 1/2" | 3 1/2" | CRFLP3M | CRFLP3MS |

FOR SQUARE OR RECTANGULAR TUBING

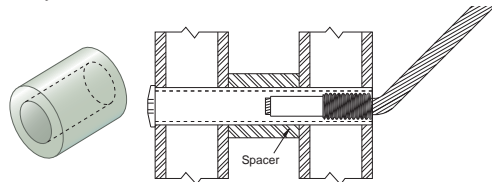
Countersunk for 1/4" mounting screws. Use for square tube or rectangular tube. Use **Spacer** shown below to the right between posts for double post applications. Butt weld to tube.



| Tube Size | Double Post With 1" Spacer | a | b | Steel 1018 | Stainless Type 304 |
|-----------|----------------------------|--------|--------|------------|--------------------|
| 1" x 3" | | 3 1/2" | 3" | CRFLP7M | CRFLP7MS |
| 3" x 3" | 1" x 3" | 5" | 3 1/2" | CRFLP8M | CRFLP8MS |
| 1" x 2" | | 3" | 2 1/2" | CRFLP4M | CRFLP4MS |
| 2" x 3" | 1" x 2" | 5" | 2 1/2" | CRFLP6M | CRFLP6MS |
| 2" x 2" | | 4" | 2 1/2" | CRFLP5M | CRFLP5MS |

SPACER

Only available in stainless steel. Insert between rectangular tube posts.



| Cable | Diameter | Wall Thickness | Length | Stainless |
|-------|----------|----------------|--------|-----------|
| 1/8" | 5/8" | .083" | .970" | CRSPCR6 |
| 3/16" | 5/8" | .083" | .970" | CRSPCR6 |
| 1/4" | 7/8" | .035" | .970" | CRSPCR8 |