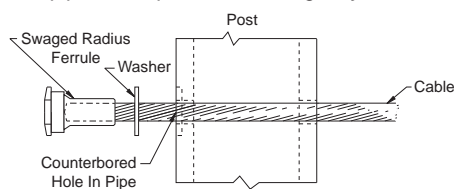


INVISIWARE® RADIUS FERRULE
Type 316 Stainless Steel

For use on the fixed, non-tensioning end of the cable, often in combination with the *Invisiware® Receiver* on the tensioning end. When installed, the fitting is hidden inside the end post with only the head exposed on the outside of the end post. Externally, it looks the same as the *Invisiware® Receiver*, but costs much less.

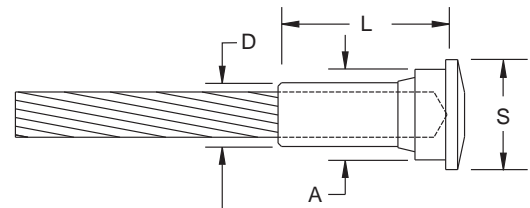
Pipe ends are counterbored so the full perimeter of the head of the *Radius Ferrule* will rest on a flat surface in the pipe. The head rests on the outside wall of a flat-sided post. A plastic washer is included and acts as a scratch resistant barrier between the *Radius Ferrule* head and the post.

For pipe and square tube railing only. The *Radius Ferrule* should not be used on rectangular, double post construction.



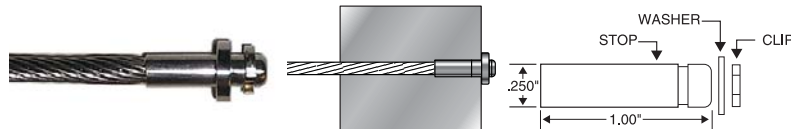
Cable Size*	L*	D*	S	A	Stainless Steel
1/8"	.750"	.250"	.537"	.437"	CRRF4
3/16"	.750"	.250"	.537"	.437"	CRRF6
1/4"	1.000"	.375"	.646"	.531"	CRRF8
5/16"	1.000"	.500"	.865"	.687"	CRRF10
3/8"	1.000"	.500"	.865"	.687"	CRRF12

* After Swaging



ULTRA-TEC® CLIP-ON STOP
Type 316 Stainless Steel

For use in posts with cables cut and fittings attached – preswaged – at the factory. No field swaging is required. A special clip and washer secure the *Stop* to the end post. Used on the non-tensioning end of the *Cable*. An *Adjust-A-Jaw®*, *Adjust-A-Body™* or *Invisiware® Receiver* is used on the opposite end to tension the cable. Available for 3/16" and 1/8" diameter *Cable* only. Includes *Stop*, *Washer* and *Clip*. Refer to page 54 for *Clip-On Fixed Jaw*.



Cable Size	Post Material	Washer Diameter	Stainless Steel
1/8"	Wood	.922"	CRCOS4
1/8"	Metal	.468"	CRCOS4M
3/16"	Wood	.922"	CRCOS6
3/16"	Metal	.468"	CRCOS6M

Ultra-tec® FIXED JAW
Type 316 Stainless Steel

Similar in appearance, the Ultra-Tec® Fixed Jaw is about one-half the price of the clevis-style *Adjust-A-Jaw®* Tensioner. Where you do not need a tensioner on both ends of the cable run, the economical *Ultra-tec® Fixed Jaw* is frequently used on the fixed, non-tensioning end of the cable with the clevis-style *Adjust-A-Jaw®* Tensioner on the tensioning end.

The *Ultra-tec® Fixed Jaw* makes a very attractive fitting where a *high-tech* look is desired on level runs as well as on pitches. The *Invisiware® Swaging Ferrule* is swaged onto the *Cable* and holds the *Cable* inside the clevis.

See the tabulated drawing to determine how to interface this fitting with your end post, or use our *Fixed Tab* or *Threaded Tab* fittings shown on page 54 of this catalog.

Cable Size	D	E	G	K	L	Use with Screw # (included)	Use with Ferrule #	Stainless Steel
1/8"	.260"	1/4-28	.260"	.560"	1.750"	CRSC6	CRF4	CRFJ62
3/16"	.260"	1/4-28	.260"	.560"	1.750"	CRSC6	CRF6	CRFJ62
1/4"	.390"	3/8-24	.313"	.750"	2.120"	CRSC8	CRF8	CRFJ82
5/16"	.390"	3/8-24	.348"	.870"	2.250"	CRSC8	CRF10	CRFJ122
3/8"	.390"	3/8-24	.348"	.870"	2.250"	CRSC8	CRF12	CRFJ122



Note: Order Ferrule separately.

