

WAGNERAIL SYSTEM

PANEL CLIPS

This selection of **Panel Clips** is used in the installation of railing infill panels. **Panel Clips** are available for use with 1/4", 3/8" or 1/2" glass, mesh or solid panels.

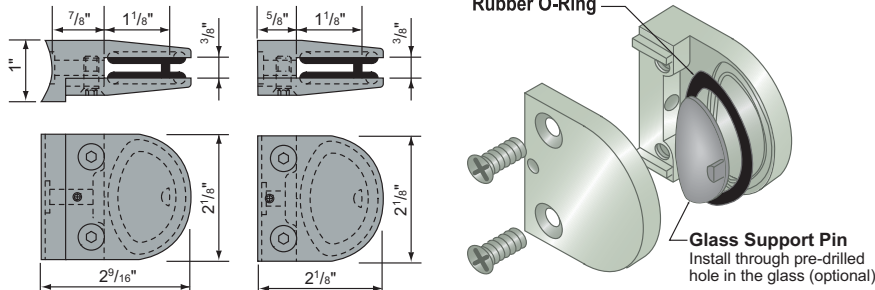
When used in a vertical mount, provide holes to match up with the security pins on the **Panel Clips** below to keep the glass or panel from sliding down over time.

GLASSGRIP™

GlassGrip™ is perfect for all guardrail applications requiring a 1/4" or 3/8" infill panel. The **GlassGrip™** tightening system utilizes solid rubber O-rings that hold the glass panels as they securely grip and prevent sliding. The optional support pin fits through a pre-drilled hole in the glass for added support. Mounting hardware is not included.

GLASS RAILING

CABLE RAILING



Brass and Stainless Steel **GlassGrips** may be used with 1/4" or 3/8" glass using the screws that are provided.

Use With:	Polished Brass	Satin Stainless	Polished Stainless
1.900" or 2.000" OD	142816-2	152816-2	162816-2
Flat	142816-F	152816-F	162816-F

SPIRAL STAIRS BALCONIES

GLASS CLAMP

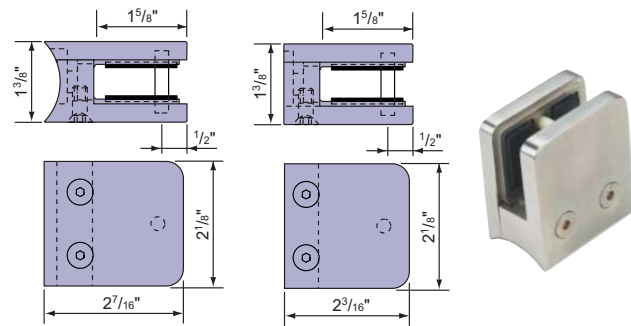
Gaskets supplied to permit use with 3/8" or 1/2" glass or panel. Mounting screw – M8 x 1.25" – included.

GLASS CLAMP

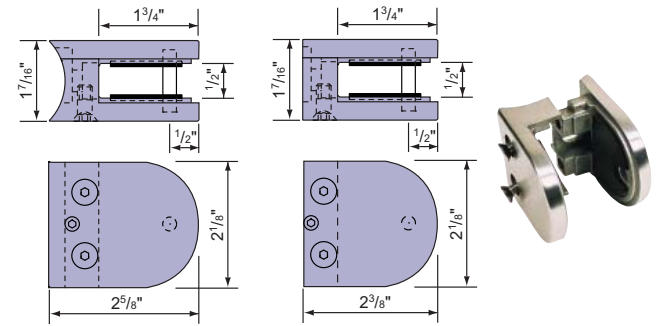
For 1/2" glass or panel. Mounting hardware not included

ALUMINUM RAILINGS

BRASS / SS FITTINGS



Use With:	Satin Stainless	Polished Stainless
1.900" or 2.000" OD	GR320R.4	GR320R.7
Flat	GR320F.4	GR320F.7



Use With:	Satin Stainless	Stainless
1.900" or 2.000" OD	152813R-2	162813R-2
Flat	152813R-F	162813R-F

HOLE SPECIFICATIONS FOR GLASS

Per ASTM C 1048, this chart should be used to determine minimum sizes and placement for tempered and heat strengthened glass.

(t) Glass Thickness	1/4"	3/8"	1/2"
(A) Minimum diameter of holes	5/16"	7/16"	9/16"
(B) Edge of hole to edge of glass	1/2"	3/4"	1"
(C) Distance between rims of holes	1/2"	3/4"	1"
(E) Distance from Corner to rim of holes	1 5/8"	2 1/16"	3 1/4"
(F) Minimum fillet radius	1/4"	3/8"	1/2"

Note: When using tempered glass, holes must be drilled prior to tempering.

