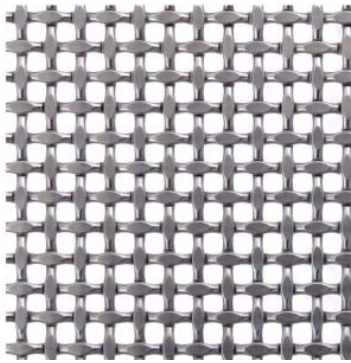


Twenty-five years of constant innovation have made Banker Wire the premier manufacturer of pre-cripped wire cloth in North America.

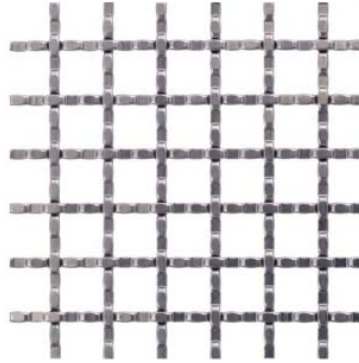
Wire from carefully selected vendors is crimped on proprietary crimping machines using tooling designed and made on site. The crimped wire is then assembled on screen assembly looms designed and built by Banker Wire's staff of engineers and machine builders.

There is total control of the manufacturing process. Exact openings, correct crimp style, dimensionally stable fabrics and complete lot to lot repeatability are all standard. There is a constant array of new specifications being developed – if you don't see it, ask. Whether the quantity of material is large or small, we have the equipment and techniques to insure maximum value.

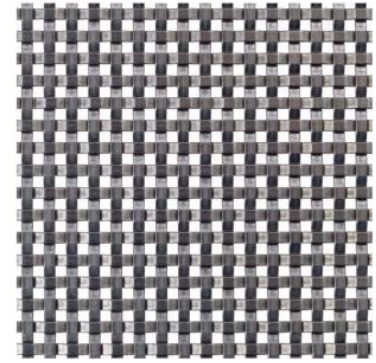
Panels are framed with 1¼" bar stock. Frame thickness is ½" to fit within Wagner Slotted Cap Rail or Glass Clip using insert on page 9.



Stainless
BWS-4
Open Area: 36.9%
Weight: 2.94 lbs/sqft
Opening Limitation: .210"
Overall Thickness: .156"
Aspect Ratio: 1.00:1



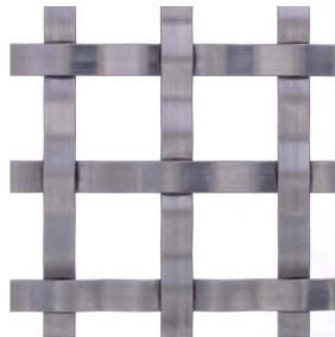
Stainless
BWS-9
Open Area: 83.4%
Weight: 1.25 lbs/sqft
Opening Limitation: .495"
Overall Thickness: .140"
Aspect Ratio: 1.00:1



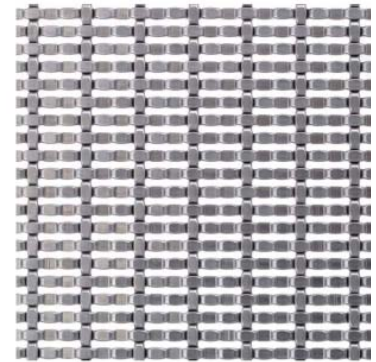
Stainless
BWS-12
Open Area: 21.6%
Weight: 1.63 lbs/sqft
Opening Limitation: .150"
Overall Thickness: .105"
Aspect Ratio: 1.00:1



Stainless
BWS-13
Open Area: 6.6%
Weight: 3.67 lbs/sqft
Opening Limitation: .125"
Overall Thickness: .125"
Aspect Ratio: 1.00:1



Stainless
BWS-15
Open Area: 51.1%
Weight: 1.50 lbs/sqft
Opening Limitation: .936"
Overall Thickness: .150"
Aspect Ratio: 1.00:1



Stainless
BWSZ-3
Open Area: 27.3%
Weight: 2.49 lbs/sqft
Opening Limitation: .095"
Overall Thickness: .130"
Aspect Ratio: 3.00:1



Stainless
BWP-278
Open Area: 70.1%
Weight: 1.70 lbs/sqft
Opening Limitation: .838"
Overall Thickness: .320"
Aspect Ratio: 1.00:1



Stainless
BWL-62
Open Area: 81.7%
Weight: 1.20 lbs/sqft
Opening Limitation: 1.810"
Overall Thickness: .380"
Aspect Ratio: 1.00:1



Stainless
BWM44-2
Open Area: 77.4%
Weight: 1.04 lbs/sqft
Opening Limitation: 2.100"
Overall Thickness: .255"
Aspect Ratio: 1.00:1

This product is in ongoing development. Refer to our web site for the latest developments. Images are approximately 50% of full size.

WAGNER
RAIL
SYSTEM

GLASS
RAILING

CABLE
RAILING

SPIRAL STAIRS
BALCONIES

ALUMINUM
RAILINGS

BRASS / SS
FITTINGS