

WAGNER RAIL SYSTEM

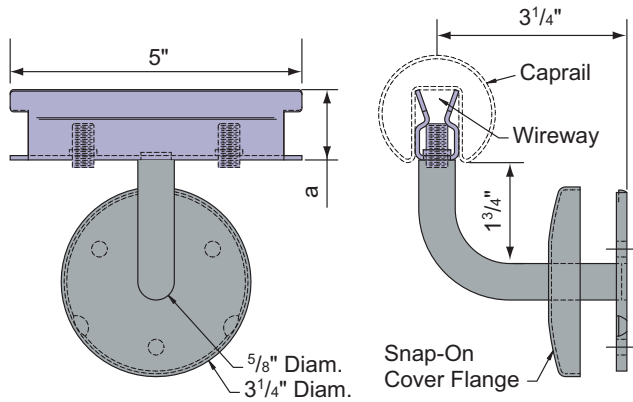
GLASS RAILING

CABLE RAILING

SPIRAL STAIRS BALCONIES

ALUMINUM RAILINGS

BRASS / SS FITTINGS



- Designed for use with **Wagner Slotted Cap Rail** sections.
- No welding or special tools.
- Unique expansion connector – *patent pending* – is inserted into the **Cap Rail** slot. Once the two set screws are fully tightened, the bracket is locked into place.

Tighten set screws to activate expansion connector locking bracket into place.

**WALL MOUNT BRACKETS**

Patent Pending

Stainless Steel bracket arms are hollow and may be used as an alternate wireway. Aluminum bracket arms are solid.

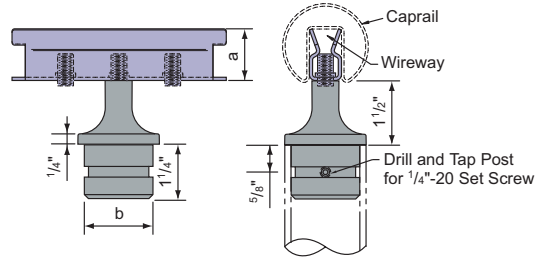
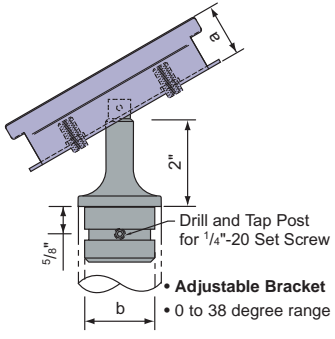
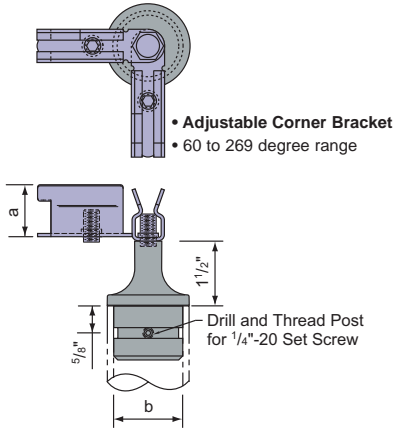
a	Satin Aluminum	Use With	Satin Stainless	Use With
1"	LU203	GR2166	LU201	GR3166
1 1/4"	LU202	GR2190	LU200	GR3190

Matching **Wall Bracket** with standard mounting saddle for non-illuminated, pipe railing. Refer to page 151.

LU207	LU206
-------	-------

**Wall Bracket Installation:**

1. Mark the location of the **Wall Mount Brackets** on your wall.
2. Use screws to fasten the wall mount bracket mounting plate to wood blocking or wall studs. Otherwise, use appropriate fasteners as determined by your particular mounting condition.
3. Loosely fasten the brackets to the wall.
4. Place the **Cap Rail** on the wall mount expansion bracket and adjust the brackets to the wall. Prior to securing, verify the fit of all joints and seams.
5. Once all joints and dimensions have been confirmed, tighten all screws.
6. Move **Snap-On Cover** into position and apply pressure to the flange to lock it onto the wall bracket mounting plate.



**POST MOUNT BRACKETS**

Patent Pending

Satin Finish	a	b	Pipe Post Size	Corner Bracket	Adjustable Bracket	Post Bracket
Aluminum	1 1/4"	1.50"	1 1/2" Sch. 80	LU334	LU332	LU330
Stainless	1"	1.37"	1 1/4" Sch. 40	LU325	LU323	LU321
Stainless	1 1/4"	1.60"	1 1/2" Sch. 40	LU324	LU322	LU320

Refer to page 150 for **Post Mount Brackets** with a standard mounting saddle for non-illuminated pipe railing.

**Post Bracket Installation:**

1. Dry assemble all components to confirm fit and dimensions prior to final assembly.
2. For adhesive connection to the post:
  - a. Apply adhesive to the inside wall of the top of the post.
  - b. Insert the **Post Brackets** into the posts.
  - c. Confirm alignment by setting **Cap Rail** into place before adhesive sets.
3. For set screw connection to the post:
  - a. Drill and thread a 1/4"-20 hole, 5/8" to center from the top of the post.
  - b. Insert the **Post Bracket** into the post.
  - c. Set **Cap Rail** into place to confirm alignment.
  - d. Use the 1/4"-20 set screw – provided – to lock the **Post Bracket** into place.
4. Once **Cap Rail** is in place, confirm alignment and tighten the two set screws on the underside of the expansion connector.

